

AMENDED SITE PLAN 7 HOLLAND WAY TAX MAP 70 LOT 104

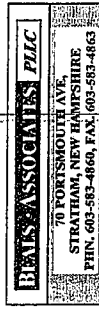
RECORD APPLICANT:

SARNIA PROPERTIES, INC.
ON BEHALF OF
EXETER MED REAL, INC.
5 ALUMNI DRIVE
EXETER, NH 03833

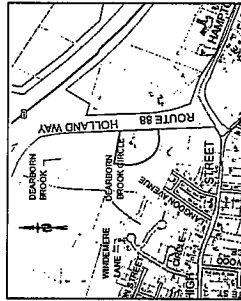
RECORD OWNER:

SARNIA PROPERTIES, INC.
958 ISLINGTON STREET
PORTSMOUTH, NH 03801

**LAND SURVEYORS /
CIVIL ENGINEERS:**



LOCATION MAP



LOCATION MAP
N.T.S.

INDEX

- TITLE SHEET
- C0 DEMOLITION PLAN
- C1 PARKING EXPANSION PLAN
- D1 CONSTRUCTION DETAILS SHEET

PLAN SET LEGEND

- CATCH BASIN
- ▣ GRAY MANHOLE
- UTILITY POLE
- PROPOSED SPOT GRADE
- ⊙ PROPOSED PARKING COUNT
- TREE LINE
- EXISTING CONTOUR - 10'
- PROPOSED CONTOUR
- ADJUTER PROPERTY LINE
- BUILDING SETBACK
- STONE WALL
- WELAND BOUNDARY
- EXISTING PROPERTY LINE



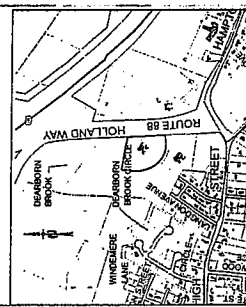
REVISIONS:	DATE:

Prepared for:

SARNIA PROPERTIES, INC.
ON BEHALF OF
EXETER MED REAL, INC.
5 ALUMINI DRIVE
EXETER, NH 03833

Prepared by:

BEALS ASSOCIATES PLLC
70 FORTSMOUTH AVE
STRATHAM, NEW HAMPSHIRE
PHN. 603-583-4860, FAX. 603-583-4863



Owner of Record

SARNIA PROPERTIES, INC.
953 ISLINGTON STREET
PORTSMOUTH, NH 03801

TAX MAP: 70 LOT: 104

Plan Title:

**PARKING EXPANSION
PLAN-C1**
7 HOLLAND WAY STATE: NH

DATE: AUG. 2008 SCALE: 1"=30'

REVISIONS: DATE:

PROD. NO: NH-256.6 SHEET NO. 2 OF 3

ZONING REQUIREMENTS

ZONE: PROFESSIONAL/TECHNOLOGY PARK (PP)
MIN. LOT SIZE = 2 ACRE
MIN. FRONT SETBACK = 50'
MIN. DEPTH = 200'
MIN. BUILDING COVER = 20%
MIN. OPEN SPACE = 55%

EXISTING SETBACKS: 75'

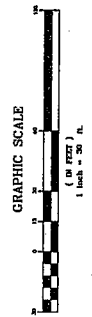
FRONT: 30'

REAR: 50'

SIDE: 75'

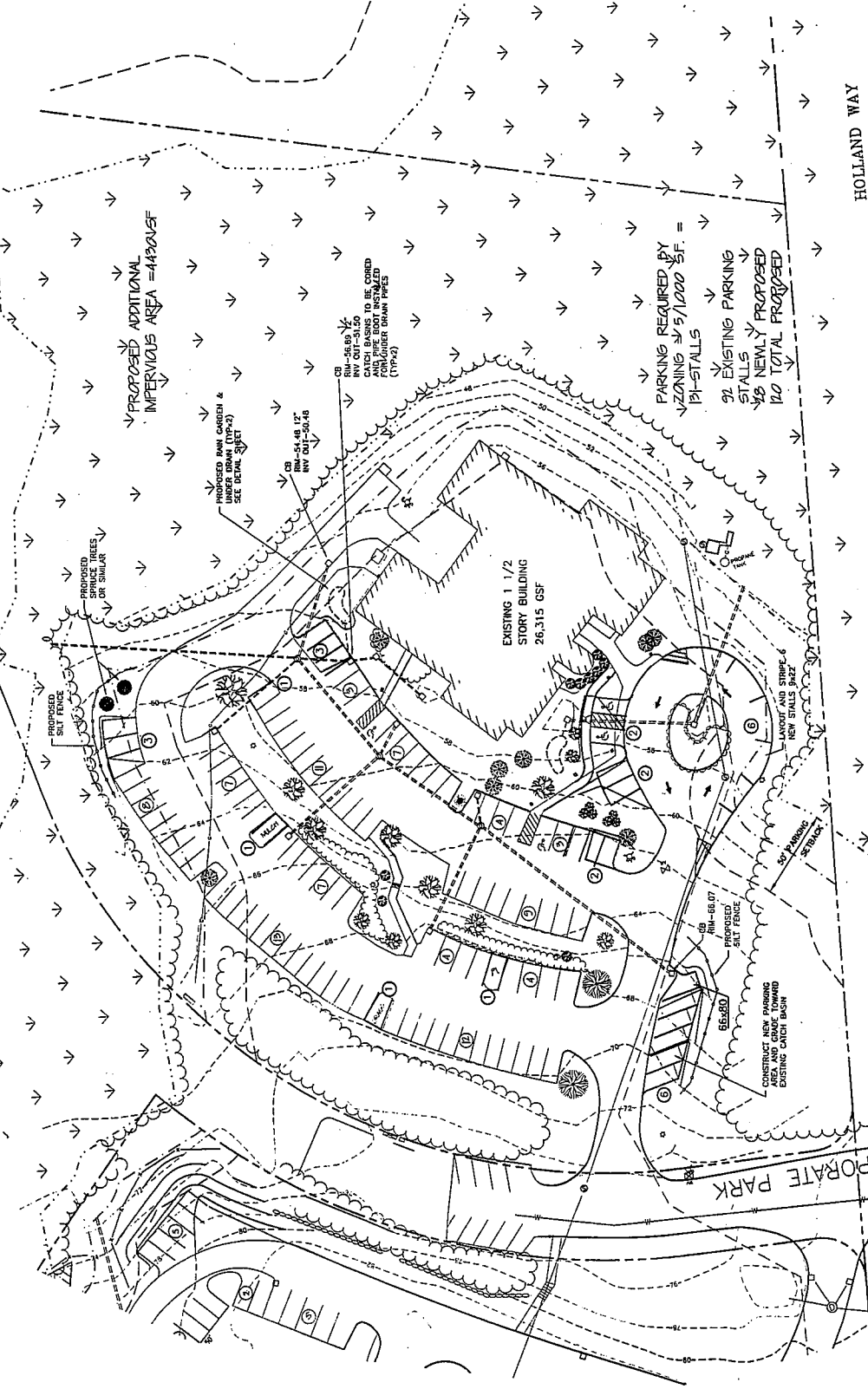
PARKING / PAVEMENT SETBACKS: 50'

WETLAND



LEGEND

- UTILITY/LIGHT POLE
- TREE LINE
- EXISTING CONTOUR - 10'
- EXISTING CONTOUR - 2'
- WETLAND BOUNDARY
- BUILDING SETBACK LINE
- PAVEMENT SETBACK LINE
- 25' NO DISTURB SETBACK
- EXISTING PROPERTY LINE

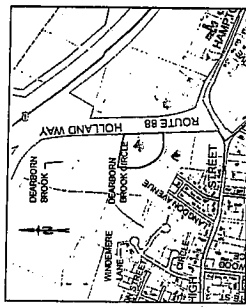


Prepared for:

SARNIA PROPERTIES, INC.
ON BEHALF OF
EXETER MED REAL, INC.
5 ALUMNI DRIVE
EXETER, NH 03833

Prepared by:

BEALS ASSOCIATES PLLC
70 FORTSMOUTH AVE.
STRATHAM, NEW HAMPSHIRE
PH. 603-583-4860, FAX. 603-583-4863



Owner of Record:

SARNIA PROPERTIES, INC.
963 ISLINGTON STREET
PORTSMOUTH, NH 03801

TAX MAP: 70 LOT: 104

Plan Title:

**DEMOLITION
PLAN-CO**
7 HOLLAND WAY

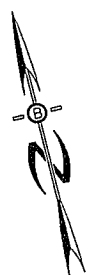
TOWN: EXETER STATE: NH

DATE: AUG. 2009 SCALE: 1"=30'

REVISIONS:	DATE:

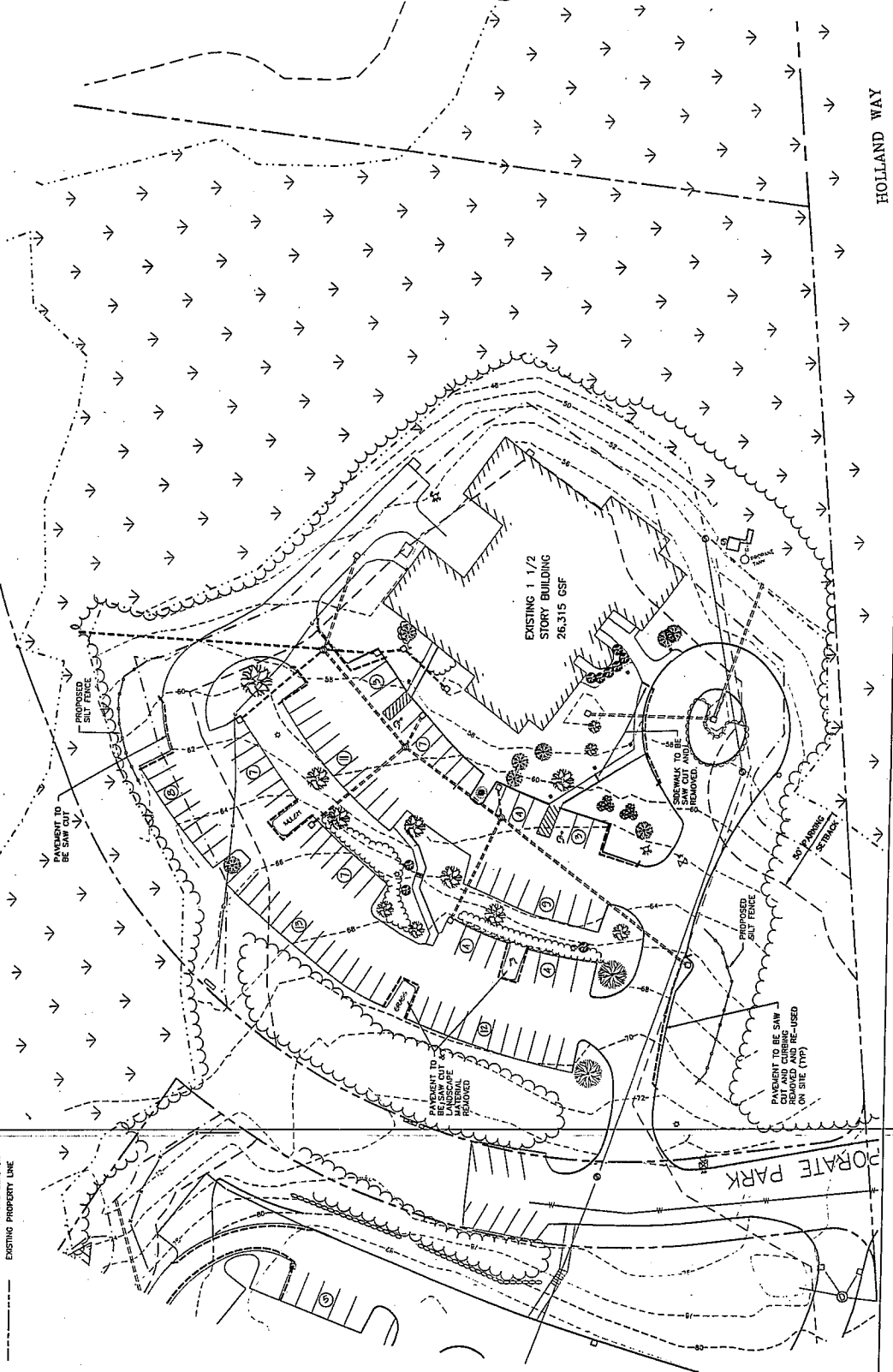
PROJ. NO. NH-236.6 SHEET NO. 1 OF 3

GRAPHIC SCALE
(IN FEET)
1 inch = 30 ft



LEGEND

- ☆ UTILITY/LIGHT POLE
- TREE LINE
- EXISTING CONTOUR - 10'
- EXISTING CONTOUR - 2'
- WETLAND BOUNDARY
- BUILDING SETBACK LINE
- PAVEMENT SETBACK LINE
- 25' NO DISTURB SETBACK
- EXISTING PROPERTY LINE



HOLLAND WAY

CORPORATE PARK

